

LEGEND

- PROPOSED STORM WATER
- - - PROPOSED BRANCH PIPE WITH GULLY
- PROPOSED BACK DROP
- PROPOSED LINEAR DRAIN
- - - PROPOSED RISING MAIN

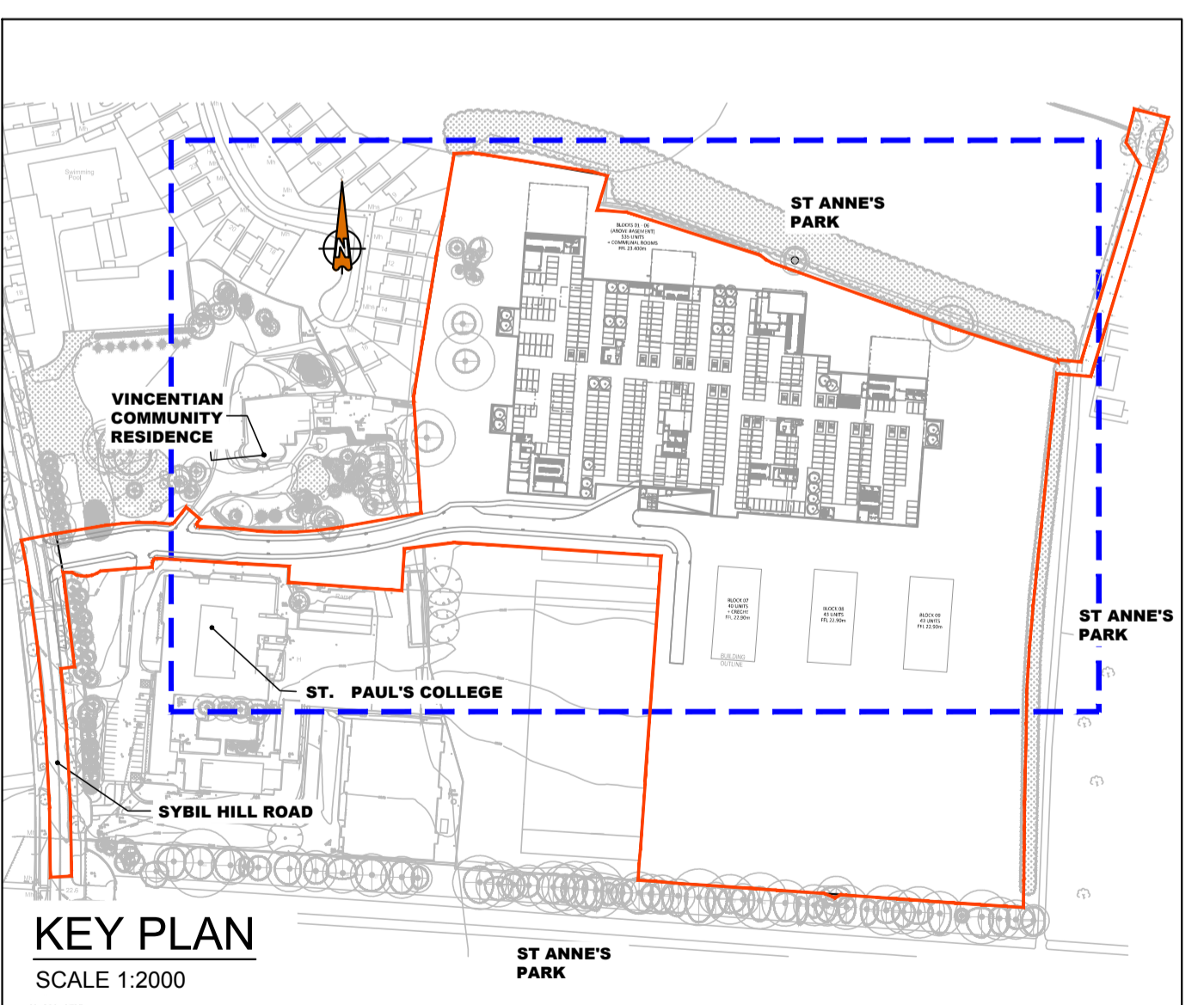
NOTES:

- ALL PIPES TO BE SIZED AND LAID AS NOTED;
- ALL POP-UP LOCATIONS AND SIZES TO BE CONFIRMED WITH ARCHITECTS & M&E DRAWINGS;
- ALL SURFACE WATER PIPES TO BE UPVC OR SIMILAR APPROVED;
- ALL INTERNAL DRAINAGE IN ACCORDANCE TO THE BUILDING REGULATIONS PART H;
- ALL 100mmØ SURFACE PIPES TO BE LAID @ 1:100 GRADIENT UNLESS OTHERWISE NOTED;
- ALL 100mmØ FOUL PIPES TO BE LAID @ 1:80 GRADIENT UNLESS OTHERWISE NOTED;
- NON RETURN VALVES TO BE TIDEFLEX IN LINE CHECK VALVE OR SIMILAR APPROVED AT PIPE OUTLETS;
- ALL CHAMBER COVERS TO BE D400 RATED;
- ALL FOUL CHAMBERS TO HAVE DOUBLE-SEALED COVERS;
- PODDE CONNECTIONS TO BE PROVIDED AT ALL BRANCH CONNECTIONS TO MAIN DRAINAGE NETWORKS, UNLESS AT MANHOLE;
- ALL RISING MAINS ARE TO BE EN598;
- ALL NOTED PIPE DIAMETERS ARE INTERNAL.

ALL DRAINAGE WORKS TO BE COMPLETED IN ACCORDANCE WITH THE STANDARD DETAILS DRAWINGS AND THE WRITTEN SPECIFICATIONS DOCUMENT 'SITE DEVELOPMENT WORKS_REV.06'.

BASEMENT DRAINAGE MANHOLE SCHEDULE

Pipe Number	US/MH Name	Pipe DIA (mm)	Pipe Length (m)	Fall (m)	Slope (1:X)	US/CL (m)	US/IL (m)	DS/IL (m)	MH Depth (m)
1.000	1.000	150	35.750	0.238	150	19.750	18.875	18.637	0.963
1.001	1.100	150	10.912	0.073	150	19.750	18.637	18.564	1.036
2.000	7.000	150	26.525	0.177	150	19.750	18.787	18.610	0.990
1.002	1.300	150	29.373	0.196	150	19.750	18.564	18.368	1.232
3.000	6.000	150	19.030	0.127	150	19.750	18.827	18.700	0.900
1.003	1.400	150	38.394	0.256	150	19.750	18.368	18.112	1.488
4.000	5.000	150	8.612	0.057	150	19.750	18.836	18.779	0.821
1.004	1.500	150	12.096	0.081	150	19.750	18.112	18.032	1.568
5.000	2.000	150	26.978	0.180	150	19.750	18.901	18.721	0.879
6.000	3.000	150	10.105	0.067	150	19.750	18.965	18.898	0.702
5.001	2.100	150	21.074	0.140	150	19.750	18.721	18.581	1.019
7.000	4.000	150	16.657	0.111	150	19.750	18.919	18.808	0.792
5.002	2.200	150	30.856	0.206	150	19.750	18.581	18.375	1.225
1.005	1.600	150	39.985	0.267	150	19.750	18.032	17.765	1.835
1.006	1.700	150	2.217	0.015	150	19.750	17.765	17.750	1.850
1.007	1.800	150	1.763	0.012	150	19.750	17.650	17.638	3.062
-	1.900	150	1.763	0.012	150	19.750	17.638	-	3.062



INFORMATION ONLY
THIS DRAWING HAS BEEN ISSUED FOR INFORMATION PURPOSES ONLY AND MUST NOT BE USED FOR CONSTRUCTION UNDER ANY CIRCUMSTANCES

NOTES

- For setting out refer to Engineer's drawings.
- This drawing to be read in conjunction with all other Engineering drawings and all other relevant drawings and Specifications.
- DO NOT SCALE THIS DRAWING. Use figured dimensions only.
- No part of this document may be reproduced or transmitted in any form or stored in any retrieval system of any nature without the written permission of O'Connor Sulton Cronin as copyright holder except as agreed for use on the project for which the document was originally issued.
- Drainage Survey of Ireland licence no. EN0000817 © Government of Ireland

Rev. No.	Date	REVISION NOTE	Dr. By	Chkd. By	Rev. No.	Date	REVISION NOTE	Dr. By	Chkd. By
P1	16/09/2019	ISSUED FOR INFORMATION	JB	AH					
P2	30/09/2019	ISSUED FOR INFORMATION	MC	JB					

OCSC
Multidisciplinary Consulting Engineers
O'Connor Sulton Cronin & Associates Ltd.
9 Prussia St., Dublin 7.

Client: Crekav Trading GP Limited.
Project: St. Paul's Residential Development.
Title: Proposed Drainage Layout Basement

TEL: +353 (0)1 8682000
FAX: +353 (0)1 8682100
e: contactus@ocsc.ie
w: www.ocsc.ie

Client: Crekav Trading GP Limited.
Project: St. Paul's Residential Development.
Title: Proposed Drainage Layout Basement

Dr. By: JB
Chkd. By: AH
Date: 16.09.19

Scale: 1:500

Doc. No.: N251 -H04
Revision: P2

Office Locations | Dublin (Head Office) | London | Cork | Galway | Belfast | Warsaw | Bucharest | Moscow | Abu Dhabi | Libya |